



sorbet^{o o o}
hairbar

menu



cut, colour & blowouts

Haircuts

| | Cut Only | With Basic Blowout | With Blowout & Style |
|------------------------|----------|--------------------|----------------------|
| Short or Medium Length | R275 | R500 | R525 |
| Long Length | R390 | R605 | R630 |
| Fringe Trim Only | R140 | | |

Colour

| | Colour Only | With Basic Blowout | With Blowout & Style |
|--------------------------------|-------------|--------------------|----------------------|
| Tint - Short | R605 | R820 | R840 |
| Tint - Medium | R710 | R920 | R945 |
| Tint - Long | R820 | R1030 | R1050 |
| Tint - Regrowth | R415 | R625 | R650 |
| Highlights - T-Section | R525 | R740 | R760 |
| Highlights - Half | R740 | R950 | R970 |
| Highlights - Full | R1160 | R1375 | R1395 |
| Highlights - per Foil | R105 | | |
| Ombre* - Short or Medium | R1600 | R1905 | R1930 |
| Ombre* - Long or Extra Long | R2015 | R2225 | R2250 |
| Balayage* - Short or Medium | R1540 | R1800 | R1825 |
| Balayage* - Long or Extra Long | R1855 | R2120 | R2140 |
| Toner only - Colour Correction | R480 | | |
| Decolouriser - Lighten Colour | R480 | | |
| Add On Colour | R105 | | |

Blowouts

| | |
|---|-------|
| Wash + Blowout | R250 |
| Wash + Blowout Package x 10* (pay for 9) | R2250 |
| Scalp Massage - Add to any Blowout (10 min) | R90 |
| Iron Only - excludes wash | R180 |
| Wash, Blowout + Styling - with curling iron | R280 |

Blowouts With Upstyle

| | |
|---|------|
| Wash, Blowout + Upstyle - Short or Medium Hair | R410 |
| Wash, Blowout + Upstyle - Long or Extra Long Hair | R440 |

*Service packages only redeemable in the store it was purchased and is only valid for 12 months from date of purchase.

*Available at selected stores



Customised Treatments

Add On Hair Mask Treatment Only
(when doing a cut or colour service)

R235

Treatments targeting your hair concerns:

Hair Treatment + Blowout (Moisture or Protein)

R370

Scalp Treatment + Blowout

R475

Repairing Hair Treatment + Blowout

R490

Hair Growth Treatment + Blowout

R550

hair treatments

Keratin Smooth Treatment

(all Hair Types - includes blowout)

INOAR **K**
Microhair

Reduces volume, eliminates frizz, restores & restructures damaged hair, resulting in straightened, renewed smoothness & shine.

| | INOAR AFRO/KST | MYCRO KERATIN |
|-------------------------|-------------------|------------------|
| Fringe Application | R450 | |
| Short Hair | R1550 | R1450 |
| Medium Hair | R1550 | R1700 |
| Long or Extra Long Hair | R1750 | R2050 |

Biosense

(excludes blowout)

PROFESSIONAL
BIOSENSE

Rebuilds the strength, structure and integrity of the hair that is caused by chemical, thermal & mechanical damage.

| | |
|---------------------------------------|-------------|
| Cryotherapy - Short Hair | R125 |
| Cryotherapy - Medium Hair | R175 |
| Cryotherapy - Long or Extra Long Hair | R245 |

Mizani*

(add on only)

MIZANI
PROFESSIONAL TECHNOLOGY
— LOREAL —

Treatments for wavy, curly and coily hair. - **excludes wash and blowout**

| | |
|--------------------------------|-------------|
| Scalp Care Treatment | R230 |
| Moisture Fusion Treatment | R230 |
| Press Agent Straight Treatment | R380 |
| Relaxer | R485 |

INOAR*

(includes blowout)

INOAR

Revives hair, leaving hair conditioned and hydrated with a glossy shine. Promotes hair growth.

| | |
|---|-------------|
| Intensive - Short or Medium Hair | R585 |
| Intensive - Long or Extra Long Hair | R795 |
| Japanese Silk - Short or Medium Hair | R690 |
| Japanese Silk - Long or Extra Long Hair | R995 |

OLAPLEX

(includes blowout)

OLAPLEX.

Rebuilds the strength, structure and integrity of the hair that is caused by chemical, thermal & mechanical damage.

| | |
|--|----------------------|
| Olaplex - Short or Medium Hair | R525 |
| Olaplex - Long or Extra Long Hair | R725 |
| Olaplex + Blowout - using Olaplex No. 2 only. | R370 |
| Olaplex 4-in-1 Mask | S/M R170 |
| Add On Olaplex to Colour - excludes blowout & wash | L/XL R315 |
| | R230 |

*Available at selected stores

extensions

Hair Extensions Bar*

| | | | |
|--|--------|--------|--------|
| Wig / Hair Extensions Blowout or Wig Drop Off | | | R290 |
| Weave Touch Up (Wash + Fix + Blowout) | | | R290 |
| Weave / Wig Installation | | | R630 |
| Weave Installation: Full House (Removal + Wash Hair + Weave + Cornrows + Install + Style) | | | R875 |
| | 30mins | 60mins | 90mins |
| Removal | R100 | R180 | R280 |
| Removal & Style Combo (*Removal + Hair Wash + Blow-Wave or Wig-lines) | | | R315 |



Braids* (Excl. Hair Fiber & Hair Wash)

| | |
|---|--------------|
| French Plait: with own hair only | R110 |
| French Plait: with own hair including blowout | R345 |
| Box Braids (Shoulder blade) | R470 |
| Normal Braids (Shoulder blade) | R570 |
| Long Braids (Lower back) | R715 |
| Bob Braids (Chin) | R410 |
| Crochet Braids | R470 |
| Braids Extra 5cm (Excl. hair) | R105 |
| Hair Design (Eg. Knotless, Butterfly Locks) *Ask instore for more | R260 - R1545 |

Corn Rows* (Excl. Hair Fiber)

| | |
|---|------|
| Cornrows (10 Lines including Hair wash + Blow-Wave) | R290 |
| Cornrows Removal (Excl. Hair wash + Blow-Wave) | R210 |

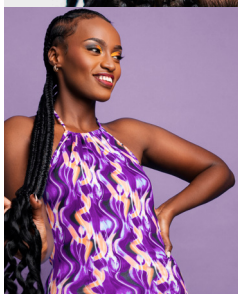
Dreads & Twists* (Excl. Hair Fiber & Hair Wash)

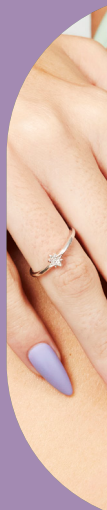
| | |
|--------------------------------|-------------|
| Dreadlocks: Full Head Touch Up | R465 |
| Dreadlocks: New Setting | R670 |
| Dreadlocks: Root Touch Up | R360 - R670 |

*Available at selected stores



and braids





brows *and lashes*

Threading

| | |
|--------------------|------|
| Brows | R125 |
| Brows + Lip | R210 |
| Brows + Chin | R210 |
| Brows + Lip + Chin | R290 |
| Full Face | R295 |

Face Wax (Hot Wax)

| | |
|--------------------|------|
| Brows | R115 |
| Lip | R115 |
| Chin | R115 |
| Brows + Lip | R195 |
| Brows + Chin | R195 |
| Lip + Chin | R195 |
| Brows + Lip + Chin | R280 |
| Full Face | R300 |

Tinting

| | |
|--------|------|
| Brows | R120 |
| Lashes | R130 |

Eyelash Extensions

| | |
|---|------|
| Full Set | R790 |
| NEW Removal + Full Set | R875 |
| Half Set or Fill | R500 |
| Volume Lashes Full Set | R980 |
| Volume Lashes Half Set or Fill | R680 |
| Full Set Mixed (Hybrid-volume + standard lashes) | R900 |
| Half Set or Fill Mixed (Hybrid-volume + standard lashes) | R600 |
| Removal | R180 |

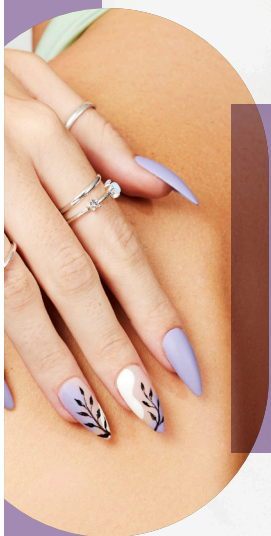
Combos

| | |
|-----------------------------|------|
| Brow Wax + Tint | R210 |
| Brow Wax + Tint + Lash Tint | R300 |
| Brow Threading + Tint | R225 |
| Brow + Lash Tint | R215 |

Make-up*

| | |
|------------------------------------|------|
| Including brows, eyes, face + lips | R400 |
|------------------------------------|------|

*Available at selected stores



nails

Soft Gel Tips

Soft Gel Tips + Gelish



R570

Soft Gel Tips + Gelish with backfill

R490

Gel Polish



Hands

Feet

Gel Polish (hands & feet only)

R345

R345

Gel Polish with Ombre

R345

Gel Polish Mini

R440

R460

Gel Polish Power

R520

R540

Gel Polish Combos

(combos to be redeemed on the same day)

Gel Polish Hands + Gel Polish Feet + 2 Soak Offs (SAVE R40)

R780

Gel Polish Hands + Gel Polish Power Pedi + Soak Off + 1 FREE Soak Off

R945

Gel Polish Power Mani + Gel Polish Power Pedi + 2 FREE Soak Offs

R1060

Manicures & Pedicures

Hands

Feet

Quick - file, buff + paint

R195

R210

Mini - soak, file, buff + paint

R295

R310

Power - soak, file, buff, paint, exfoliation & massage

R365

R385

No Paint Power - excludes polish

R265

R335

Summer Heel - excludes pedicure*

R220

12 years and under

R120

R135

Anti-Ageing

A scientifically formulated, advanced anti-ageing manicure and pedicure. Utilising products that are packed with growth factors and other pharmaceutical grade ingredients to ensure long lasting and effective results.

Anti-Age

R450

R495

Anti-Age + Gel Polish

R595

R645



*Available at selected stores

MediPedi

A non-invasive advanced paramedical foot treatment to soften callouses, corns, cracked heels or rough dry skin on the feet.

| | |
|-------------------|------|
| MediPedi No Paint | R590 |
| MediPedi + Paint | R710 |
| MediPedi + Gelish | R795 |
| MediPedi + EVO | R795 |

DMK

Danné Montague-King®



Harmony Acrylic

Tips

| | |
|-------------------------|------|
| + Colour | R520 |
| + Ombre | R550 |
| + Gel Polish | R570 |
| + Gel Polish with Ombre | R600 |

Overlay

| | |
|--------------------|------|
| + Natural / Colour | R470 |
| + Ombre | R490 |
| + Gel Polish | R520 |

Fill & Buff

| | |
|--------------|------|
| + Natural | R360 |
| + Polish | R380 |
| + Ombre | R390 |
| + Gel Polish | R430 |

Sculptured Nails*

| | |
|------------------------|------|
| + Colour | R580 |
| + Gel Polish | R610 |
| Fill & Buff | |
| + Natural | R390 |
| + Ombre | R420 |
| + Gel Polish | R450 |

Biogel by Bio Sculpture

Biogel

| | |
|--------------|------|
| + Hands Only | R435 |
| + Mini Mani | R570 |
| + Power Mani | R620 |
| + Feet Only | R435 |
| + Power Pedi | R630 |

Tips

| | |
|--------------|------|
| + Gel Polish | R590 |
|--------------|------|

Overlay

| | |
|--------------|------|
| + Polish | R495 |
| + Gel Polish | R540 |

Fill & Buff

| | |
|--------------|------|
| + Polish | R385 |
| + Natural | R365 |
| + Gel Polish | R425 |

Polygel

With Gel Polish

| | |
|---------------|------|
| + Tips | R640 |
| + Overlay | R585 |
| + Fill & Buff | R510 |
| + Sculptured | R670 |

* Available at selected stores



Soak Offs & Removals

(when doing a new set or reapplication)

| Gel Polish | E-file | Acrylic | Biogel | Polygel | Gelish Soft Gel |
|-------------------------------------|--------|---------|--------|----------|-----------------|
| R65 | R65 | R80 | R75 | R75 | R75 |
| | | | | No Paint | Paint (incl) |
| Soak Off Gel Polish with Quick Mani | | | | R140 | R240 |
| Soak Off Acrylic with Quick Mani | | | | R160 | R250 |
| Soak Off Polygel with Quick Mani | | | | R160 | R250 |

Nail Rehab

IBX

| | |
|---------------|------|
| + Nail Repair | R140 |
| + Soak Off | R200 |

Nail Art*

| | |
|--|-----|
| Nail Art (per nail) using Gelish Blooming Gel | R15 |
| Nail Art Basic (per nail) | R15 |
| Nail Art Sticker (per nail) | R25 |
| Nail Art - Chrome or Rhinestone (per nail) | R25 |
| Paint On Nail Art (per nail) | R35 |

* Available at selected stores

Nail Add Ons & Repairs

Nail Repair

| | |
|-----------------|-----|
| + Gel Polish | R45 |
| + Biogel | R45 |
| + Acrylic | R55 |
| + Polygel | R55 |
| + Soft Gel Tips | R55 |

Paraffin Dip

| | |
|-----------------|------|
| + Hands or Feet | R160 |
|-----------------|------|

Add On

| | |
|------------------------------|------|
| + French Paint | R45 |
| + Rubber Base* | R30 |
| + Brush-On Builder | R50 |
| + Summer Heel Express* | R160 |
| + NEW Chrome Full Set | R220 |

Join Our Loyalty Programme



Up to 50% off on your Birthday*



Awesome promotions



Earn rewards

APP



GET IT ON
Google Play

Download on the
App Store

MENU



SCAN ME

OUR PROMISE

If you are not totally satisfied with your treatment, you don't have to pay. We are only happy when you are.

Ts & Cs Apply.

CONTACT US:

JHB Support Office 011 202 7940

KZN Support Office 031 010 0059

CPT Support Office 021 434 3902

FOLLOW US:

   @sorbethairbar



www.sorbethairbar.co.za

For Sorbet franchise information, please contact franchising@sorbet.co.za
Prices as of March 2024. Prices subject to change. *Ts & Cs apply.